



# Historic Palace

Lisbon Centre

## Investment file



**HQ:** Rua Aprígio Mafra, 17 – 3º Esq.  
1700-051 LISBON, Portugal

[contact@globalconsultants.eu](mailto:contact@globalconsultants.eu)  
[www.globalconsultants.eu](http://www.globalconsultants.eu)

+351 21 0174 047

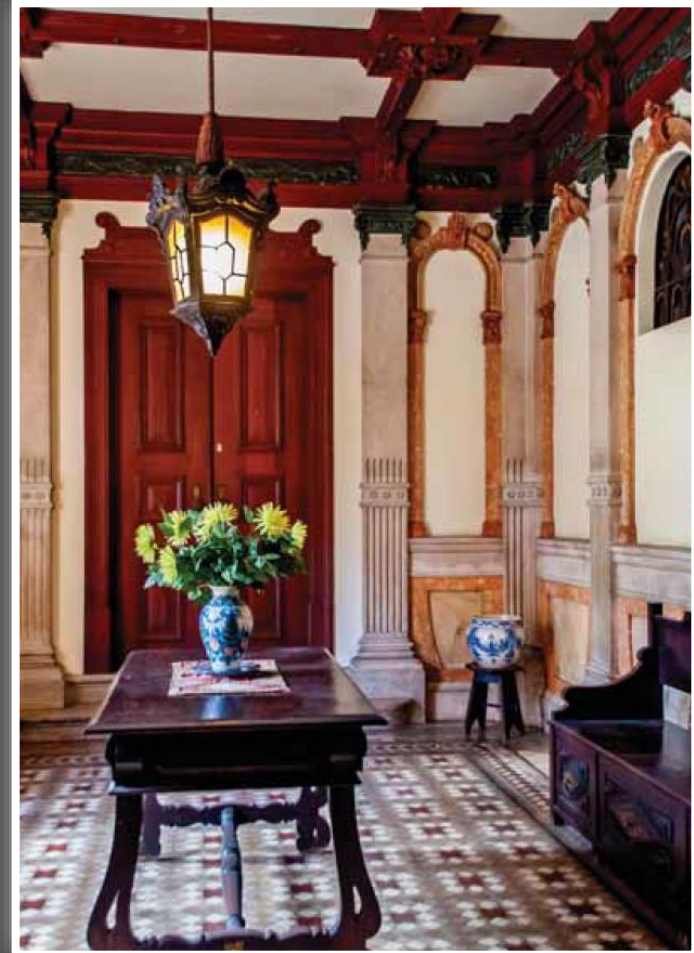
**Account Manager:** Nuno Filipe Caetano  
[nunocaetano@ecn.pt](mailto:nunocaetano@ecn.pt)  
+351 93 4874 022

# Historic Palace

Lisbon Centre



Main entrance





# Historic Palace

Lisbon Centre



Stairway & upper balcony





# Historic Palace

Lisbon Centre



## Salon



# Historic Palace

Lisbon Centre



Hallway – 1<sup>st</sup> floor



# Historic Palace

Lisbon Centre



## Suite



# Historic Palace

Lisbon Centre



Bathroom

# Historic Palace

Lisbon Centre



## Kitchen





# Historic Palace

Lisbon Centre



Attic/ loft





# Historic Palace

Lisbon Centre



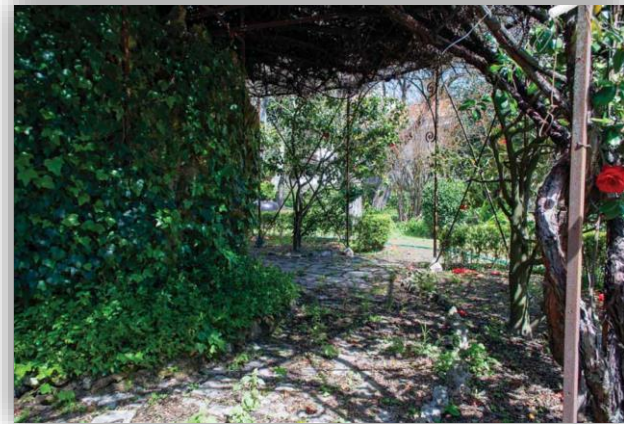
## Courtyard





# Historic Palace

Lisbon Centre



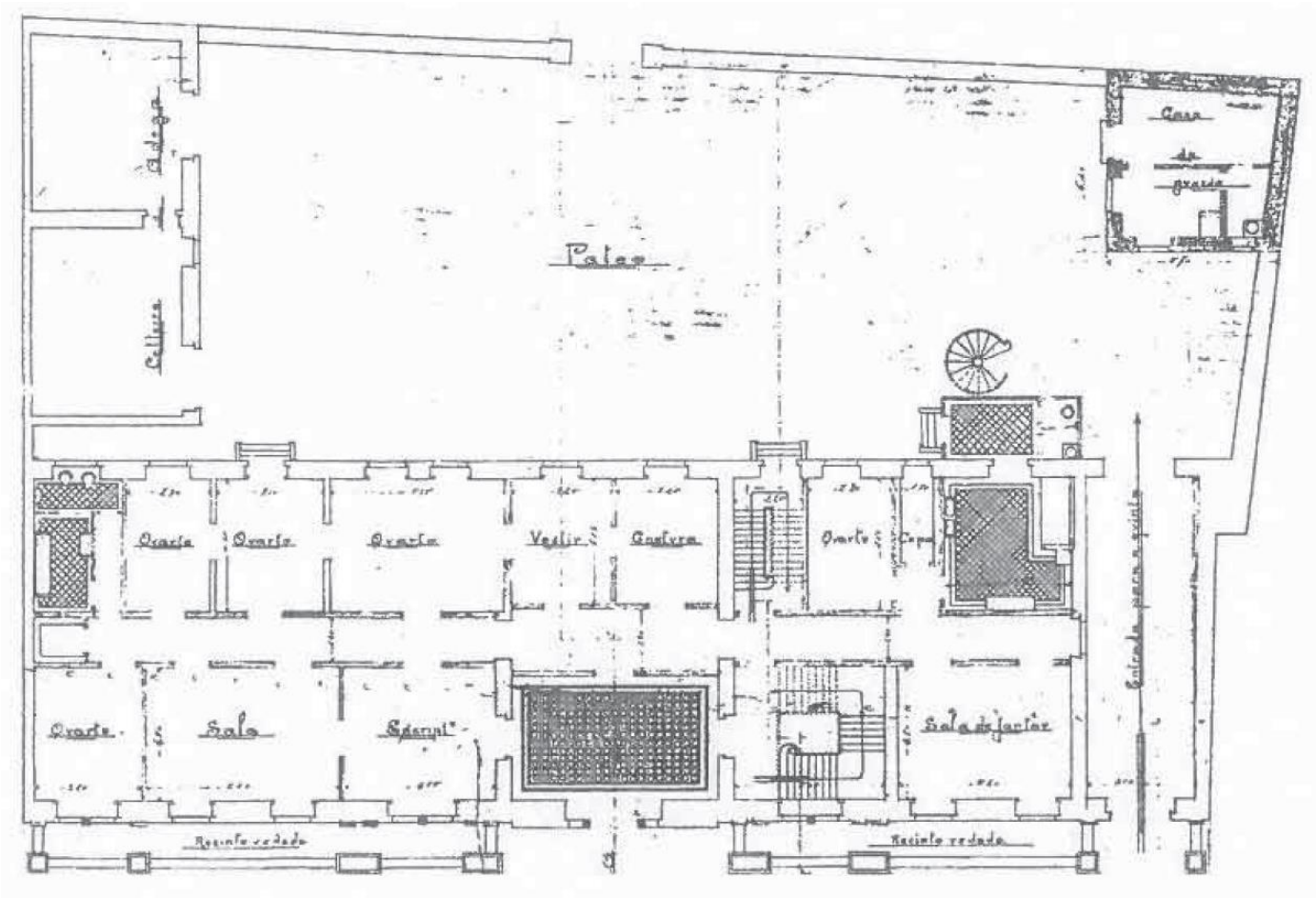
Garden



Historic  
Palace

Lisbon Centre

Plan – Ground floor



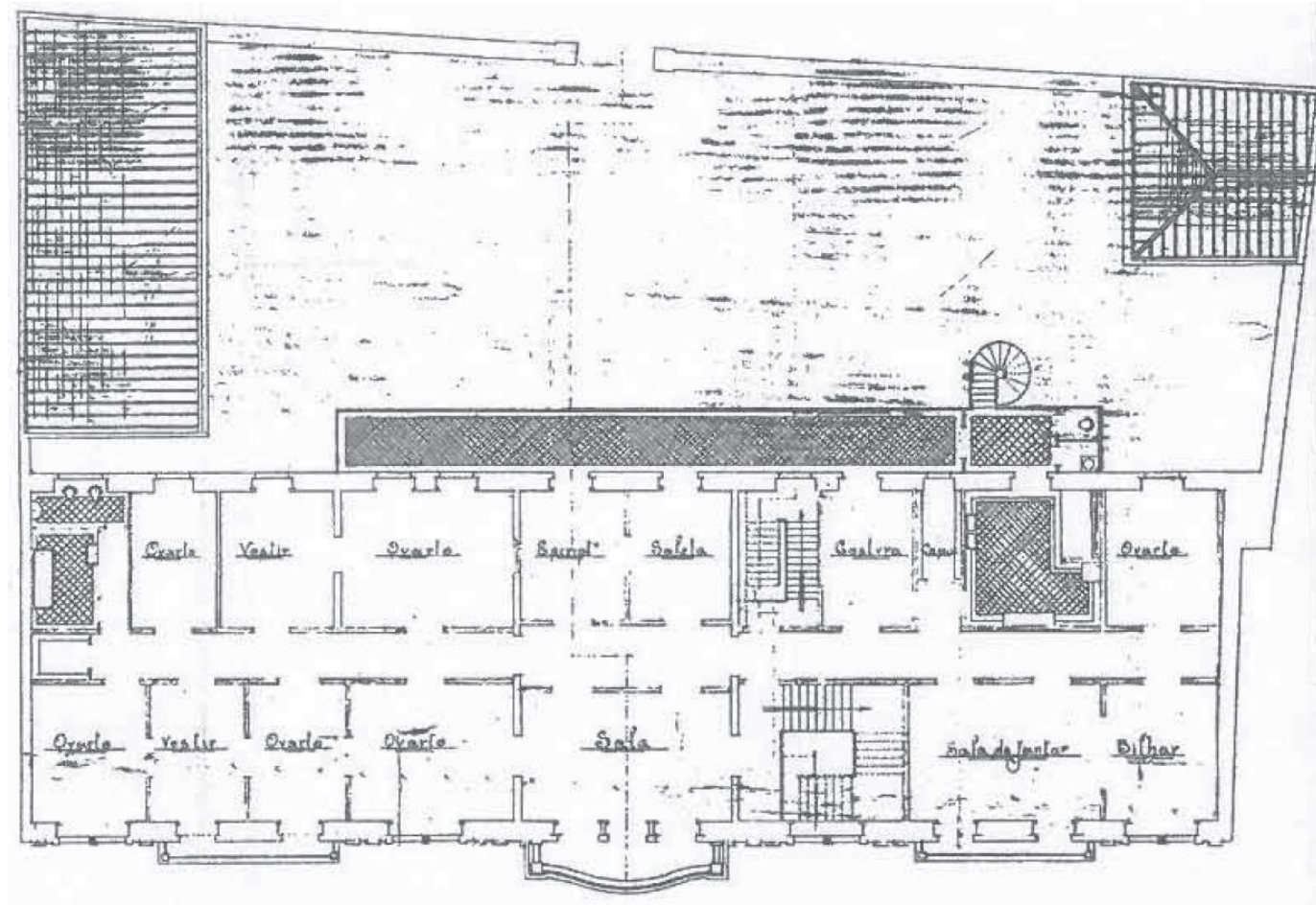
Note: Original plans but representative of the existing



# Historic Palace

Lisbon Centre

Plan – 1<sup>st</sup> floor



Note: Original plans but representative of the existing

Historic  
Palace

Lisbon Centre

# The property

## Overview

Classified as Historic Palace, this exquisite property is located in the heart of Lisbon.

Built in the mid 19<sup>th</sup> century, it was totally rebuilt in 1912.

The facade and back were rehabilitated in 2015. The roof was totally replaced at the same time.

With its amazing 4.300 sqm garden, the 435 sqm courtyard and the windmill, benefiting of total privacy, this property is ideal for an embassy, a company/ bank headquarters or an exclusive law firm.

Asking price  
9.000.000€

## Features

Location	Lisbon Centre
Type	Historic Palace
Style	19 <sup>th</sup> century manor
Intervention	Indoor rehabilitation; Outdoor cleaning

## Nearby facilities

- Major public and private hospitals
- Health clinics
- Public services
- Gardens and leisure areas
- Shopping
- Universities
- Restaurants
- Sports facilities

## Areas

### Indoor

Total useful area	1.387 m <sup>2</sup>
Ground floor	495,5 m <sup>2</sup> (10 rooms)
1 <sup>st</sup> floor	495,5 m <sup>2</sup> (10 rooms)
Attic/ Loft	396 m <sup>2</sup> (open space)
Annex houses	200 m <sup>2</sup>
Warehouse/ Cellar	70 m <sup>2</sup>
Garage	35 m <sup>2</sup>

### Outdoor

Courtyard	435 m <sup>2</sup>
Garden	4.318 m <sup>2</sup>



With us, you will not sail by yourself



**Head  
Quarters**

Rua Aprígio Mafra, 17 – 3º Esq.  
1700-051 LISBON, Portugal

[contact@globalconsultants.eu](mailto:contact@globalconsultants.eu)  
[www.globalconsultants.eu](http://www.globalconsultants.eu)

+351 21 0174 047

**Account  
Manager**

Nuno Filipe Caetano  
[nunocaetano@ecn.pt](mailto:nunocaetano@ecn.pt)

+351 93 4874 022

BUSINESS  
& INVESTMENT  
CONSULTANTS



REAL ESTATE  
CONSULTANTS



BUSINESS  
BROKERS



**Disclaimer**

This document has been prepared for general information purpose only. It does not represent any contract or commitment to Global Consultants or any other part. Detailed info and advise must be obtained before taking any investment decision or any action regarding the subject presented hereby.